



Getman materials transport vehicles are versatile underground carriers designed to move materials throughout a mining operation reliably and efficiently, ensuring loads are delivered where they are needed when they are needed. Available crane packages maximize the opportunity for utilization throughout underground operations while increasing efficiency and productivity during loading and unloading scenarios.

Getman's A64 Crane trucks offer a range of payload packages from 4,540 kg to 8,620 kg (10,000 lb to 19,000 lb), and all include enclosed below-deck storage compartments for straps, winches and tools. Selectable low-deck and high-deck configurations allow for optimized loading scenarios, and the optional high-capacity Palfinger crane offers 180° of slewing and a capacity of up to 2,100 kg (4,630 lb) at maximum extension. Stake pockets, optional ratcheting straps and tie down points ensure loads are securely fastened to the deck for tramping.

A64 materials transport vehicles protect worker safety by eliminating the need for workers to physically lift, position and transport heavy loads. The optional crane can be operated away from the loading and unloading area, ensuring workers are kept clear from moving loads. The crane system is inclusive of outriggers that ensure stability in all permissible loading situations.

## Technical Specifications

### Engine

- Tier III approved engine - 4-cylinder
  - › Mercedes Benz OM904LA, 129 kW (173 hp) @ 2200 rpm
  - › Cummins QSB4.5, 127 kW (170 hp) @ 2200 rpm
- Liquid-cooled, turbocharged
- 113 L (30 gal) fuel tank with self-closing cap

### Exhaust System

- Catalytic exhaust conditioner and silencer

### Transmission

- Dana Clark 32000 powershift transmission
- Three speeds forward and reverse
- 4-wheel drive

### Axles

- Planetary drive axles
  - › Heavy-duty Kessler S41 axle package
  - › Enhanced capacity Kessler S72 axle package

### Tires

- Mine service tires
  - › 10.00×20-16pr
  - › 12.00×20-28pr

### Brake System

- Fully hydraulic wet disc service brakes on each axle
- Spring applied, hydraulic pressure release wet disc secondary brake
- Automatic secondary brake application upon loss of brake accumulator pressure, transmission pressure or electrical power

### Steering

- Orbitrol controlled articulated frame steering
- Heavy-duty, self-aligning bearings inside replaceable inserts
- Two double-acting steer cylinders with replaceable bushings in cylinder and frame ears
- 40° articulation each direction

### Hydraulic System

- Hot side/cold side engine layout
- Hydraulic hoses routed to cold side of engine
- Open center hydraulic circuits with gear hydraulic pump
- Diagnostic test ports with quick couple fittings for: each axle, service brake application pressure, and hydraulic pumps
- 10-micron return filter
- 151 L (40 gal) hydraulic reservoir

### Operator Compartment

- Three-point contact for entry and exit
- ROPS/FOPS certified compartment (SAE J1040C, CSA B-352, ISO 3471)
  - › Open canopy
  - › Enclosed cabin with heater and air conditioner
- Operator and passenger seating
- Mechanical suspension operator seat
- Retractable lap seat belts

### Instrumentation

- Engine and transmission gauges
- Engine temperature
- Engine oil pressure
- Voltmeter
- Hour meter
- Tachometer
- Transmission clutch pressure
- Converter temperature
- Brake accumulator pressure gauge
- Brake accumulator low-pressure warning
- Park brake applied warning light
- Audio/visual alert for high engine temperature
- Audio/visual alert for low engine pressure

### Electrical System

- 24 V, 100 A alternator
- Lockable electrical master switch (lockout)
- Maintenance-free 12 V batteries
- LED lighting package (IP69K rated): two 900 lm front headlights, two 900 lm rear headlights, two 900 lm working lights
- Sealed and oil resistant wiring
- Fully sealed connectors
- Fully sealed electrical boxes

### Other General Equipment

- Variable audio backup alarm (87-112dBA)
- 2.3 kg (5 lb) fire extinguisher
- Wheel chocks
- Four nozzle Ansul fire suppression system tied to engine shutdown (LTA-101-30)

### Optional Equipment

- Wiggins fill system
- Lincoln auto-lubrication package
- Ansul Checkfire automatic actuation fire suppression system with linear detection loop

### Deck and Crane Arrangement\*

#### Materials Transporting Package

- Deck area for materials transporting
  - › Low Flatdeck: Deck height 848 mm (2 ft 9 in), distance between the fenders 1251 mm (4 ft 1 in)
  - › High Flushdeck: Deck height 1172 mm (3 ft 10 in), mounted over fenders for a fully flat cargo area
- Palfinger PK8501A crane with shortened mast mounted at articulation joint
- Crane outriggers for unrestricted capacity when machine is articulated
- 7.8 tm (56,400 ft-lb) class capacity crane
- 180° crane slewing angle

#### Materials Transporting Package – Additional Options

- Storage compartments available underneath deck
- Available tie-down straps for securing cargo during tramming
- All models also available without crane for increased deck area

#### Crane Capacities

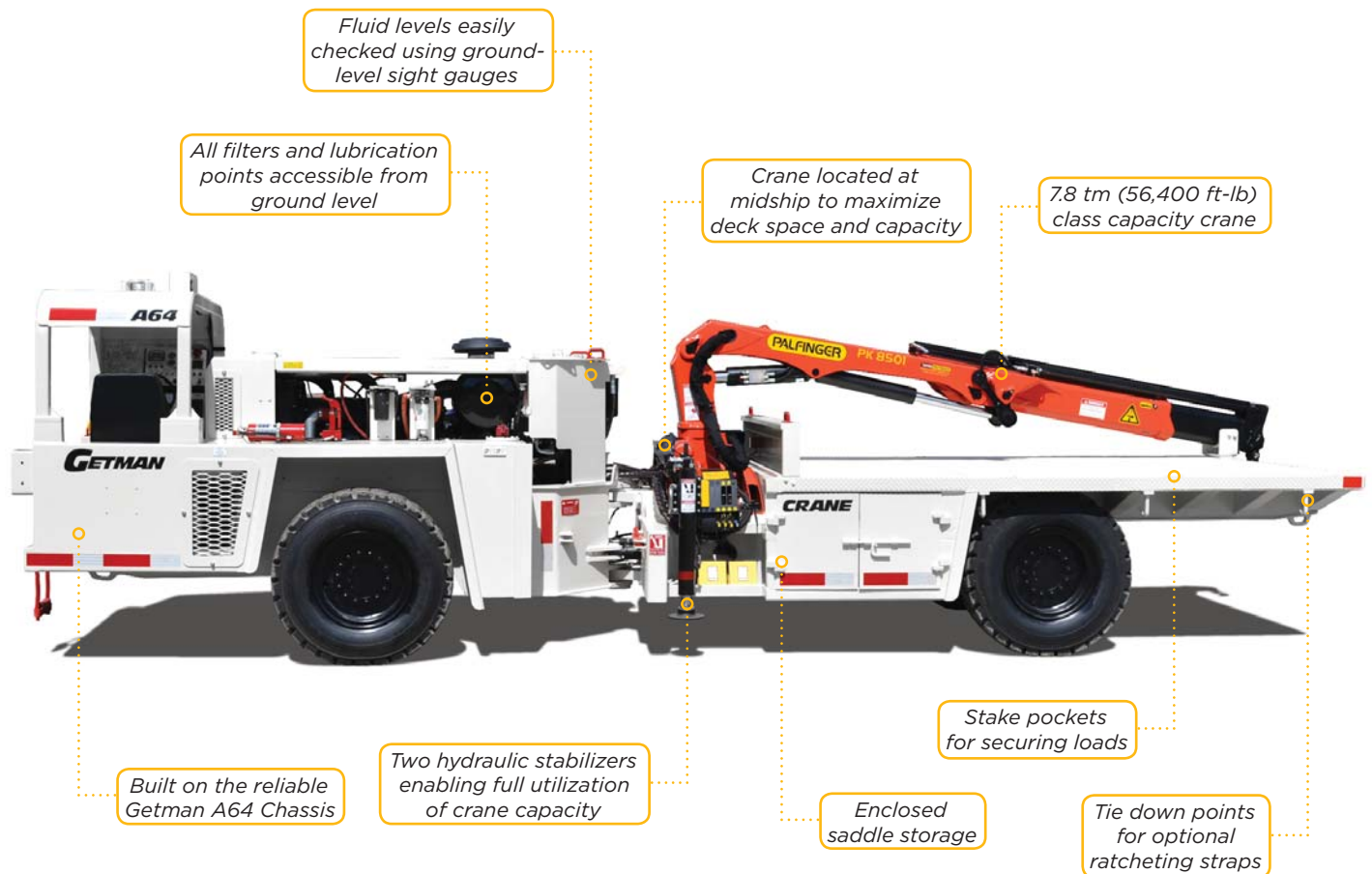
	PK8501A Weight Limit
<b>3912 mm (12 ft 10 in) Outreach</b>	2100 kg (4629 lb)
<b>5600 mm (18 ft 4 in) Outreach</b>	1340 kg (2954 lb)
<b>7600 mm (24 ft 9 in) Outreach</b>	1000 kg (2205 lb)

#### Deck Capacities

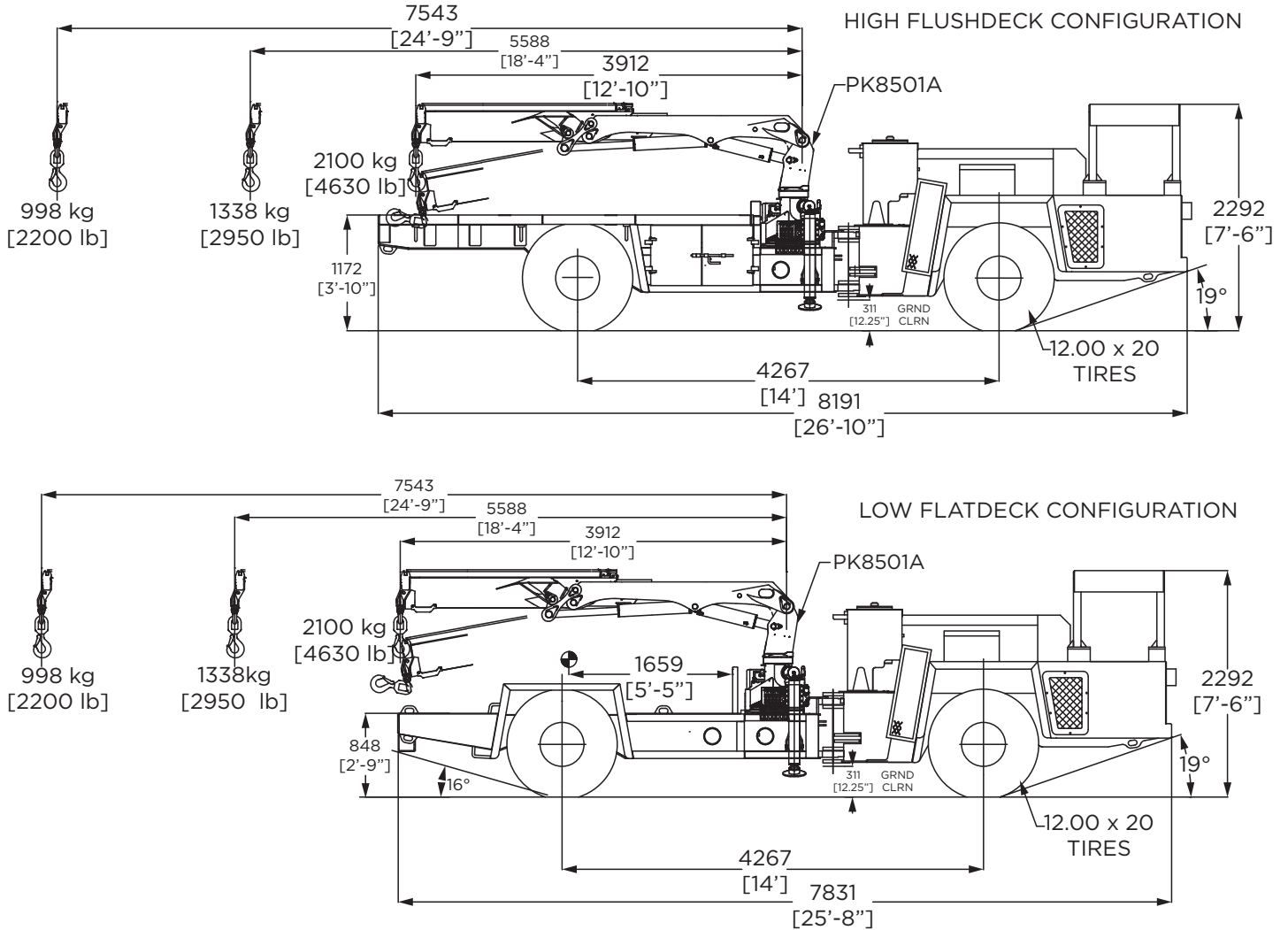
	28.43 Axles 10x20 Tires	28.43 Axles 12x20 Tires	28.60 Axles 12x20 Tires
<b>A64 Crane-S Low Flatdeck</b>	4,540 kg (10,000 lb)	X	X
<b>A64 Crane Low Flatdeck</b>	4,540 kg (10,000 lb)	5,450 kg (12,000 lb)	8,620 kg (19,000 lb)
<b>A64 Crane High Flushdeck</b>	X	4,540 kg (10,000 lb)	7,710 kg (17,000 lb)

\*Consult Getman for special configurations

### Design Features and Layout

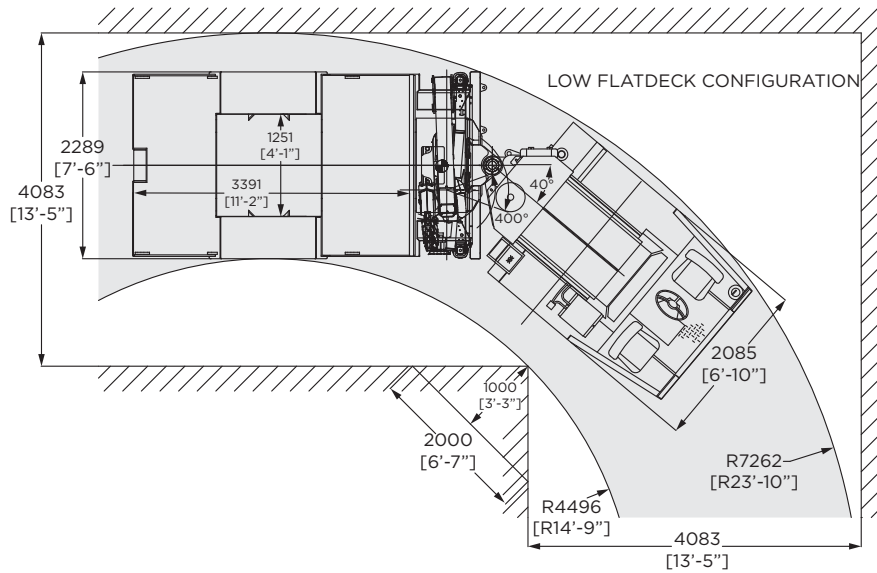
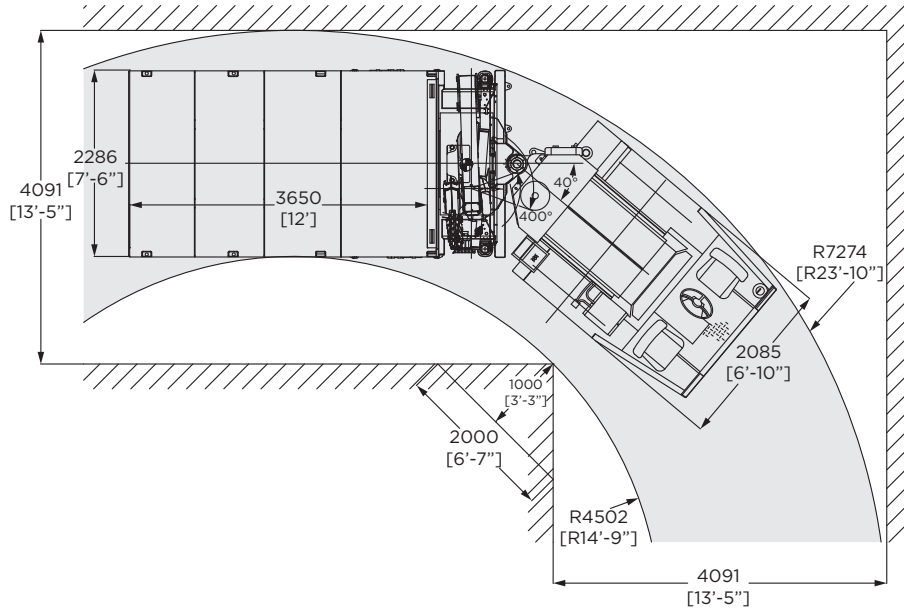


### Dimensions and Maneuverability



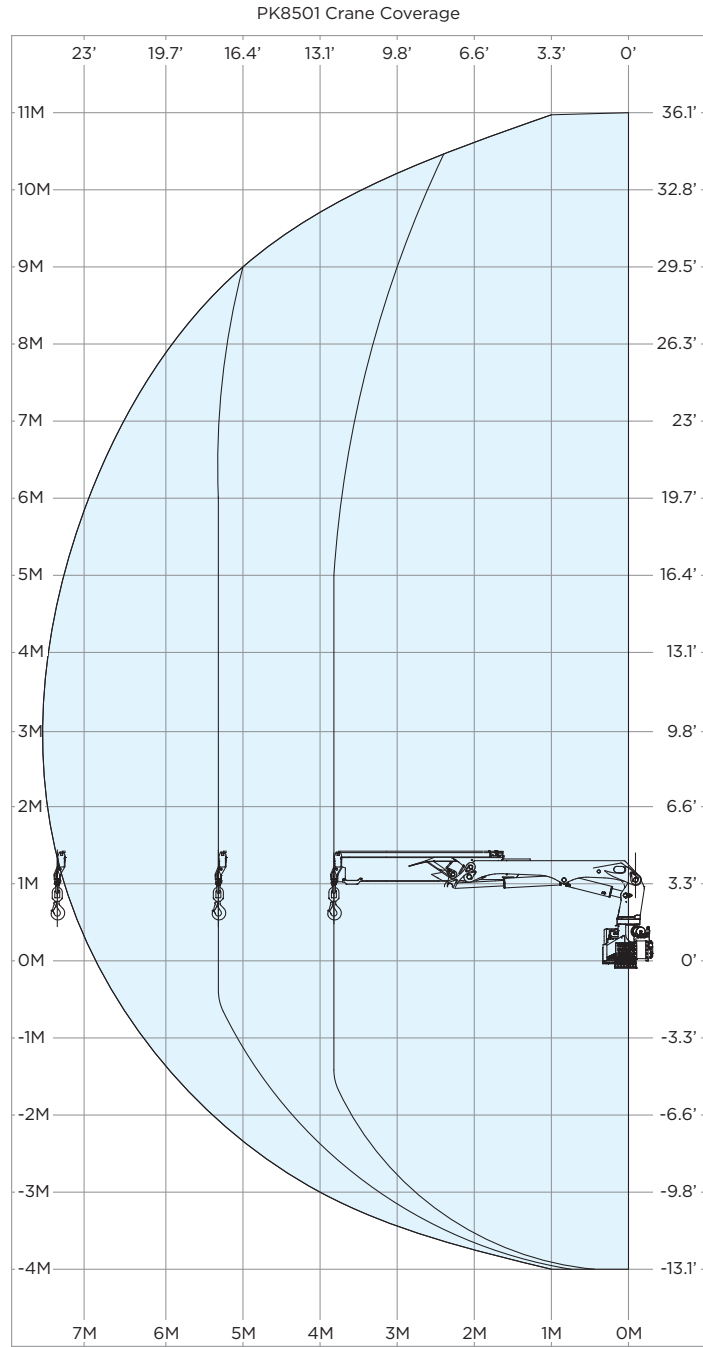
Machine Length (Low Flatdeck)	7831 mm	308 in
Machine Length (High Flushdeck)	8191 mm	322 in
Wheelbase Length	4267 mm	168 in
Ground Clearance	311 mm	12.25 in
Machine Height (Canopy)	2292 mm	90 in

### Dimensions and Maneuverability



Machine Width	2286 mm	90 in
Inner Turning Radius	4502 mm	177 in
Outer Turning Radius	7274 mm	286 in

**Crane Coverage Area**



## Engine and Performance

### Mercedes Benz OM904 Engine Package

<b>Manufacturer</b>	Mercedes
<b>Model</b>	OM904
<b>Stage</b>	Tier III
<b>Design</b>	4 Cylinders in line, water cooled
<b>Max Power</b>	129 kW (173 hp) @ 2200 rpm
<b>Exhaust System</b>	Catalytic exhaust conditioner and silencer
<b>Aspiration</b>	Turbocharged
<b>Fuel Consumption</b>	220 g/kW-hr (0.361 lb/hp-hr)

### Cummins QSB4.5 Engine Package

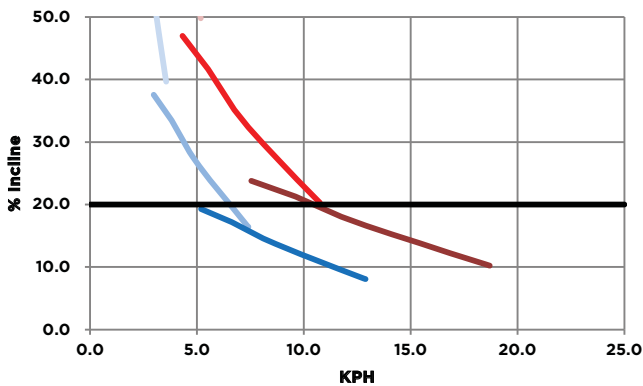
<b>Manufacturer</b>	Cummins
<b>Model</b>	QSB4.5
<b>Stage</b>	Tier III
<b>Design</b>	4 Cylinders in line, water cooled
<b>Max Power</b>	127 kW (170 hp) @ 2200 rpm
<b>Exhaust System</b>	Catalytic exhaust conditioner and silencer
<b>Aspiration</b>	Turbocharged
<b>Fuel Consumption</b>	243 g/kW-hr (0.399 lb/hp-hr)

**Speed Chart with Estimated GVW: 11,800 kg (26,000 lb)**

- Dana Clark 32000 Transmission
- Standard Heavy-Duty Kessler S41 Axles
- 10x20-16pr Mine-Duty tires

**Speed Chart with Estimated GVW: 20,400 kg (45,000 lb)**

- Dana Clark 32000 Transmission
- Enhanced Capacity Kessler S72 Axles
- 12x20-28pr Mine-Duty tires

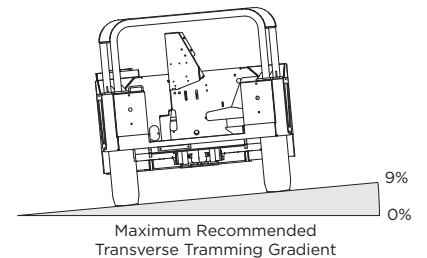
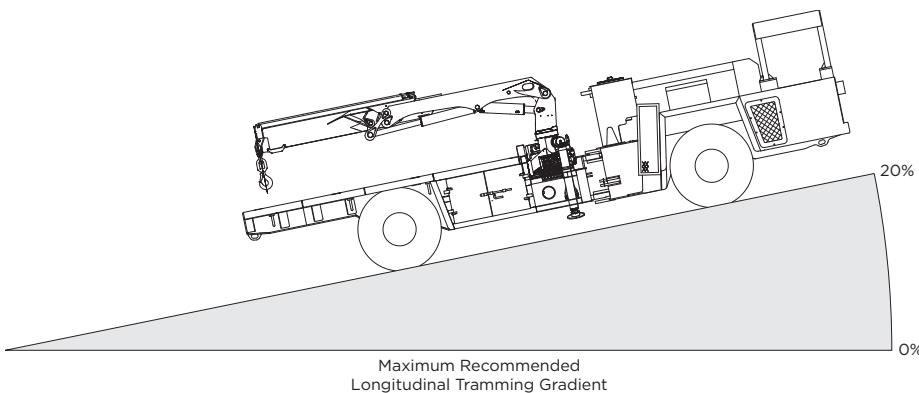
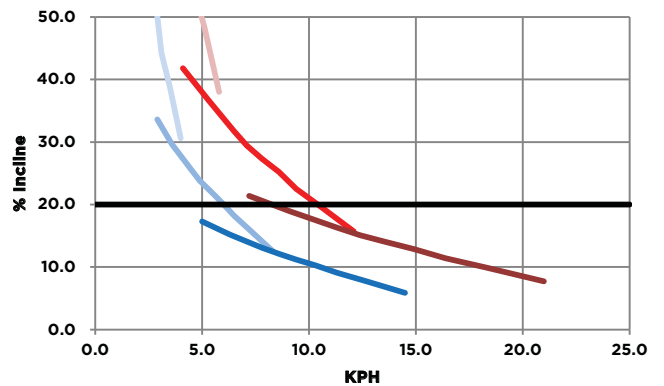


**Speed Chart with Estimated GVW: 11,800 kg (26,000 lb)**

- Dana Clark 32000 Transmission
- Standard Heavy-Duty Kessler S41 Axles
- 10x20-16pr Mine-Duty tires

**Speed Chart with Estimated GVW: 20,400 kg (45,000 lb)**

- Dana Clark 32000 Transmission
- Enhanced Capacity Kessler S72 Axles
- 12x20-28pr Mine-Duty tires





### About Getman Corporation

Getman Corporation is a global supplier of mobile equipment to the mining industry, offering customer-specific solutions to underground mines in the production and production support classes of equipment. All Getman equipment is designed with extensive research and development and is supported by over fifty years of experience in serving the underground mining industry.

Through our network of distributors we sell and support our products on six continents, offering exceptional product solutions and following up with world class aftermarket support. At Getman Corporation, designing and building trucks for the underground mining industry is what we do. We take pride in being the preferred supplier of underground production and production support equipment to miners globally by offering customer-specific, value-driven and long-lasting solutions.

For more information contact your Getman distributor or email us at [info@getman.com](mailto:info@getman.com), or visit our website at [www.getman.com](http://www.getman.com).

For parts or service support, email us at [parts@getman.com](mailto:parts@getman.com) or [service@getman.com](mailto:service@getman.com).



*Getman Corporation assembled this datasheet with the intention of passing along the most accurate information possible, however this document shall not be binding in any way and shall be considered informational only. All values stated herein are theoretical in nature. All orders are accepted based on the terms and conditions set forth in the individual purchase or sales agreement. Getman reserves the right to make changes to the specification herein at any time and without further notification.*

*Pictured machines in this document may contain optional and additional equipment.*