



**SPARTA**

## **USL5000 UNDERGROUND SCISSOR LIFT**

---



## **USL5000 UNDERGROUND SCISSOR LIFT**

Our SPARTA Scissor Lift trucks are designed for the rugged underground landscape, and can be used in an assortment of mining operations. They are engineered with safety in mind and are vigorously tested to ensure that the elevating platforms and ground supports are versatile and stable during operation. All of our SPARTA Scissor Lifts are built in-house by TES Inc. and provide a safe and sturdy surface that workers can trust.

The SPARTA Scissor Lift is built with a heavy duty construction frame, featuring a Cummins Diesel QSB 4.5 130 HP at 2200 RPM engine, with a deck length of 3.66 meters and a deck width of 2.44 meters. The SPARTA Scissor Lift includes platform lift capacities of 5,000 pounds, and a tramming height of 2.67 meters. Other features include 4-wheel drive and articulated steer carrier, ABA brake system, audio backup alarm, led lighting and strobe lights, and a 24V electrical system.



## TECHNICAL SPECIFICATIONS

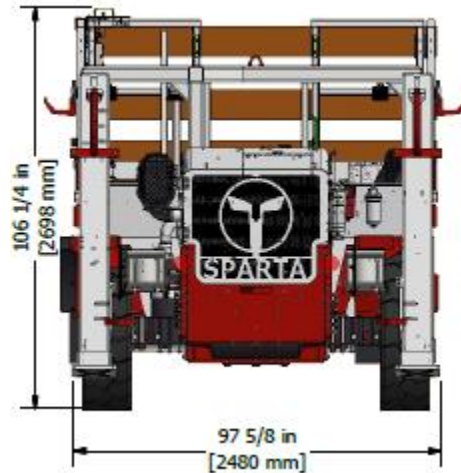
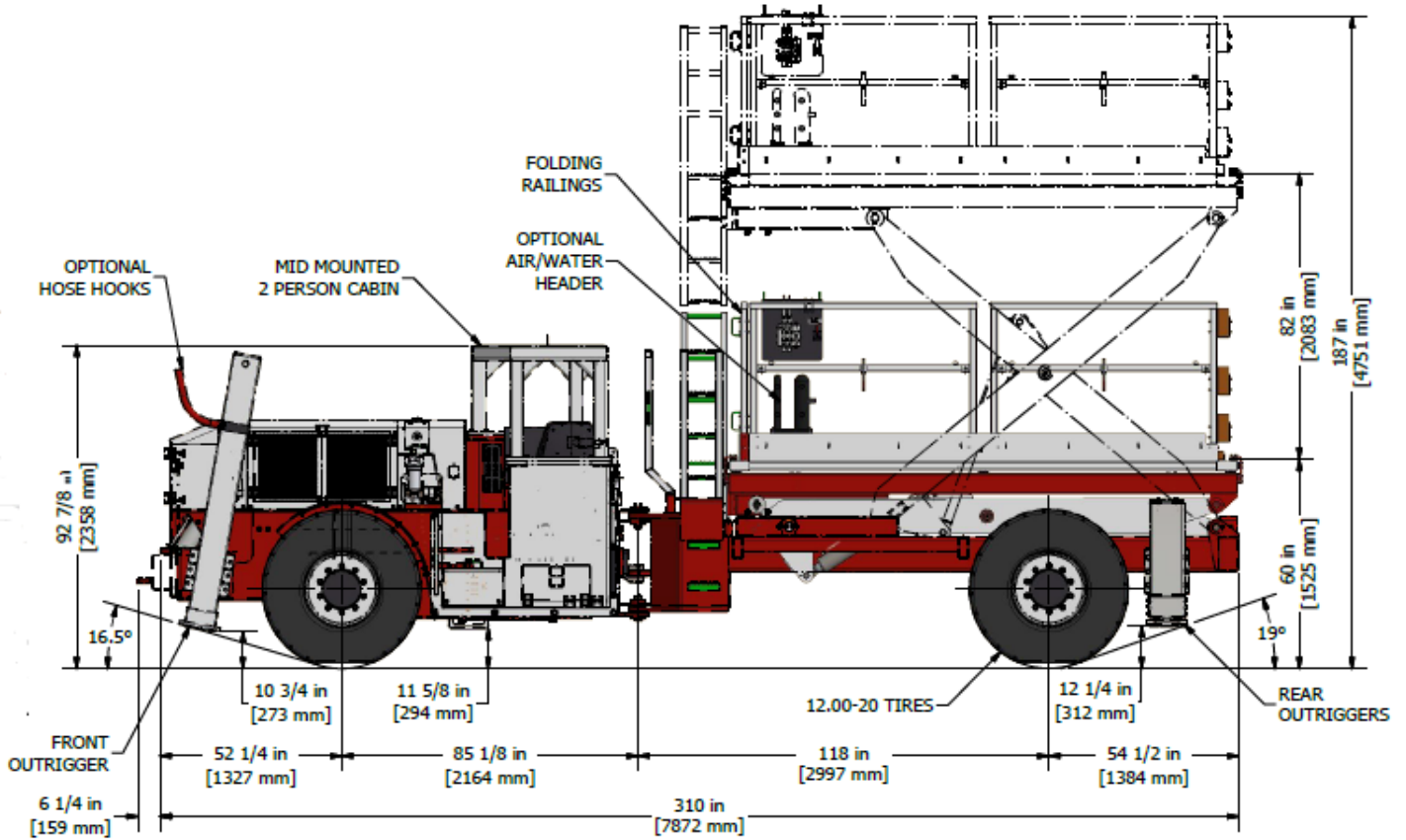
<b>Engine:</b>	<b>Cummins QSB 4.5 Diesel (130 hp), Tier 33 w/ Dana 20000 transmission</b> Mercedes 904 Diesel (148 hp), Tier 3 w/ Dana 20000 transmission Cummins QSB6.7 Diesel (193 hp), Tier 3 w/ Dana 32000 transmission Mercedes 906 Diesel (201 hp), Tier 3 w/ Dana 32000 transmission
<b>Transmission:</b>	<b>DANA 20000 series</b> DANA 32000 series
<b>Axles:</b>	DANA 113 SAHR
<b>Deck Dimensions:</b>	2.44 m x 3.66 m (96" x 144")
<b>Side Shift:</b>	0.6 m (24")
<b>Deck Capacity:</b>	2268 kg (5,000 lbs)
<b>Empty Weight:</b>	16,347 kg (36,150 lbs)
<b>Fire Suppression System:</b>	Certified ANSUL 4 Nozzle, liquid
<b>Tramming Height:</b>	2.67 m (106")
<b>Width/ Length:</b>	2.46 m (97") / 7.87 m (310")
<b>Inside Turning Radius:</b>	5.72 m (225")
<b>Outside Turning Radius:</b>	8.63 m (340")
<b>Tires:</b>	12.00-20 <b>- Pneumatic: Front ( ), Rear ( )</b> - Foam Filled: Front ( ), Rear ( ) - Solid: Front ( ), Rear ( )
<b>Spare Tire:</b>	<b>- Pneumatic ( )</b> - Foam Filled ( ) - Solid ( )
<b>Electrical:</b>	24V electrical system ABA brake system Audio back up alarm Engine oil pressure switch LED lighting installed Lock out on master switch Strobe light (red, blue, white, amber) Wheel chocks and brackets
<b>Frame Unit:</b>	Heavy duty construction frame Four wheel drive, articulated steer carrier ROPS/ FOPS canopy Spare tire included 3 sets of manuals with electronic version 4 independent outriggers, 34" front / 14" rear Fire extinguisher
<b>Options:</b>	Enclosed environmental cab (AC and heater system) Central lubrication system (Lincoln) Wiggins fast fill fuel system ANSUL "Check fire" with detection system Air ride seats (qty 2) Seat belt warning system Air power pack 24V auxiliary lighting Air driven auxiliary hydraulic power pack Hose reels for air/water Exhaust shielding options (Firwin / Mammoth) Front fenders Front bumper Electric fill pump c/w filters Hydraulic low level warning light Air water manifold Fold down deck railings 3000W 120V power inverter Magnetic deck work lights



**SPARTA**

**USL5000 UNDERGROUND SCISSOR LIFT**

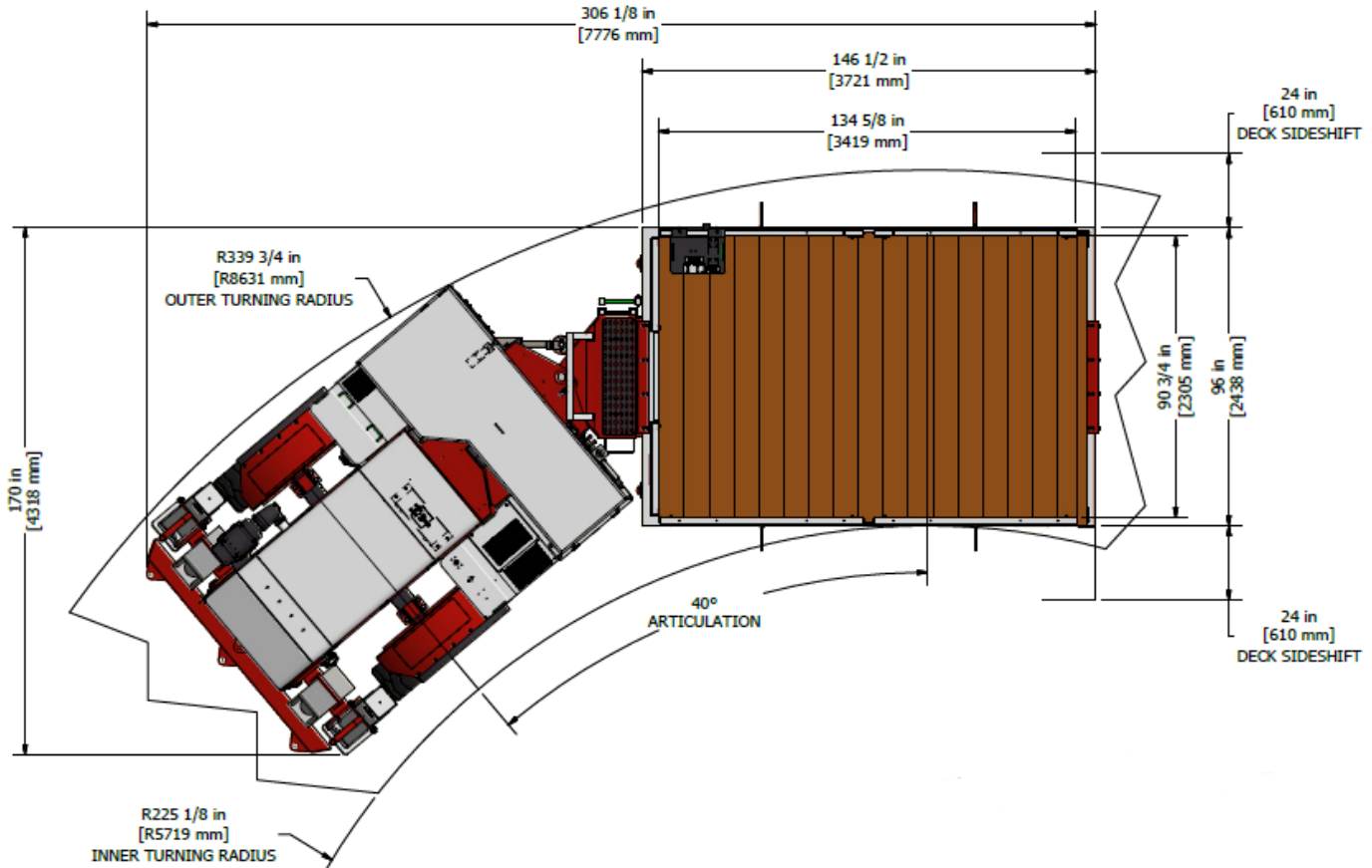
## DIMENSIONS





**SPARTA**

## MANEUVERABILITY



## WHY CHOOSE US

Choosing TES Inc. as your mining supply partner means you are choosing to invest in quality, reliability, and safety. Having worked in the mines ourselves, we understand you need every piece of equipment to be made with the utmost care, to support your production goals, and keep your mine moving.

SPARTA is a custom line of underground utility vehicles that is engineered and manufactured by TES Inc. Included in this line of mobile utility vehicles are Scissor Lift Trucks, Boom Trucks, Narrow Veins, Man Carriers, Lube Trucks, Flat Decks, and Anfo Loaders.